



## Hoole St Michael CE Primary School Autumn 1 Overview Class: Enterprise

**Bold** *Christian Values* **Resilience** **Strong Relationships** **Active Learners** **partnership**

**Courageous** **Confidence** Thirst for knowledge **Growth Mindset** SUMO Foræst School **Enrichment**

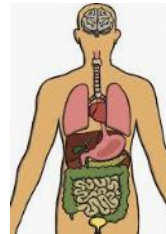
### English: Active Learners/Confidence

As part of our topic, we will read the wonderful story by J.K Rowling, The Ickabog. This will be our class novel and feed into our narrative unit based on issues and dilemmas.

We will also write a persuasive leaflet, linking this to our science topic and encouraging people to take care of their teeth.



### The Art of Food



**Christian Value-**  
Justice

### RE for this half term-

Easter- A story of betrayal and trust.

### PSHE for this half term

Belonging to a Community and Safe Relationships.

### British Value

Democracy

### Maths:

In maths this half term we will complete our unit on multiplication and division. We will then complete units on graphs, fractions and time.

As a school, we are going to introduce the geometry unit into our weekly maths lessons. Geometry will be taught throughout school on a Friday morning.

We will also continue to do our daily Fab Four and Fluency sessions each morning.

### Geography/History:

In History this half term we travel right back to just after when the dinosaurs lived. We will **compare** Britain now and then, and explore what it was like in the Stone Age Era. We will **research** Stonehenge and **visit** this place virtually in order to imagine what life would have been like as a hunter-gatherer. In geography, we will focus our learning on volcanoes and earthquakes. We will **investigate** active, dormant and extinct volcanoes and **locate** them on maps. We will **spot links** and see if we can **find patterns** between countries.

### PSHE

This half term we will link our PHSE unit to our RE and make links to Jesus' community. We will discuss the importance of belonging to a community or group. We will also talk about relationships and how to make sure these relationships are safe.

Music We will be linking our music unit to RE this half term and compose our own music to perform in our Easter performance at the end of the half term. Children will listen to a range of music and discuss how it makes them feel (Upbeat, calm) and then explore the use of instruments when replicating their own.



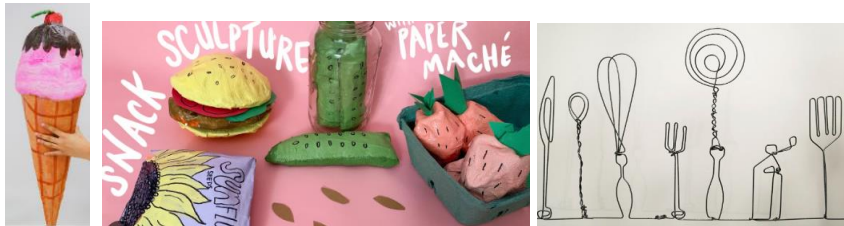
## Hoole St Michael CE Primary School Autumn 1 Overview Class: Enterprise

### **P.E: Confidence, courageous, partnerships**

In our PE units this half term, the children will have to show great **confidence** and **courage**. The children will continue to work on their **sportsmanship**, **listening** and **perseverance** within every PE lesson. This half term the children will have a weekly swimming lesson as part of their PE lessons. The children will work on their water safety and ability to swim unaided.

### **Art:**

This half term, we will focus our art work around sculpture. The children will explore the work of famous sculptors and recognise techniques that have been used. The children will then work with a variety of media, such as wire and papier-mâché to create their own sculptures of food.



**Science: Active learners/partnerships** In science this half term we will be finding out about the functions of our teeth and how our digestive system works. Children will learn about the specific role each tooth has and the importance of looking after our teeth. We will then move on to our digestive system and investigate the role of each organ within this system.

The children will create their own model digestive system. They will work collaboratively to make their model and record their work individually in books.

### **IT: Meaningful progression of skills**

Our IT unit for this half term is text and images. We will use different font sizes, colours and effects to communicate with an audience. We will also use various layouts, formatting, graphics and illustrations when displaying our work.