



Hoole St Michael CE Primary School Spring 1 Overview Class:



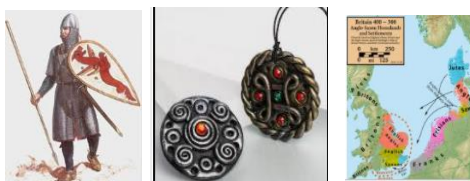
Bold *Christian Values* **Resilience** **Strong Relationships** **Active Learners** **partnership**

Courageous **Confidence** Thirst for knowledge **Growth Mindset** SUMO Foræst School **Enrichment**

English: Voyagers and Valour

We begin the half term with legends of the British Isles and the **courageous** story of Beowulf. We will continue the year-long theme of heroes and villains, exploring the **bravery** of Beowulf and the villainous Grendel. We will explore the tale through short writing activities, and work to create a legend of our own. Linking to our learning in history, we will also be creating persuasive leaflets to advertise our very own Anglo Saxon theme parks.

Voyagers Valour Artisan



Maths: Mastery – Growth Mindset Resilience

Fractions is the focus of learning in both Year 5 and 6 this half term. We will be recognising them, simplifying them, spotting equivalents and calculating with them too. Throughout, we will see the link between fractions, decimals and percentages, encouraging deep and broad links in learning. We will be working practically to form fractions, unlocking the maths and using our **Growth Mindset** to apply our learning to various representations.

Geography/History: Voyagers Artisan

History: The history of the Anglo Saxon invasion and settlement of the United Kingdom. We will be studying their motives for travel, craftsmanship and ultimate ruling of our nation with an Anglo Saxon king of the whole of England.

Geography: Locations, physical and human features of the United Kingdom. **Thirst for knowledge** to delve deeper into key locations. Link to DT with a study of famous bridges and islands of the UK.

Christian Value: Perseverance

R.E. Jesus the Teacher

Science: Active Learners Partnerships Confidence

This half term is all about saying, 'What if?' Our focus is on **investigation-led learning** with children building their **confidence** to try out their theories and work together to create fair, accurate tests. The focus of our studies will be the properties of materials. We begin by exploring what materials are best for being waterproof but keeping us warm. We will then move on to dissolving and discovering if we can reverse changes we have made to materials.

DT: Active Learners Partnerships Perseverance

Design and make a portable catapult structure that could be used for attack.

P.S.H.E.

Digital Media and Resilience
Continuation of Growing and Changing

P.E: Active learners Partnerships

Tag Rugby - team work and confidence. Outdoor and Adventure

Computing: Meaningful progression of skills

This half term, the children will be looking at using Microsoft Excel to create spreadsheets. The children will look at entering values into cells and create graphs from these. We will also be using formula to find averages linked to weather data.

British Value: Rule of Law

Music: Enrichment Focus on rock music - Living on a Prayer

French: Thirst for knowledge - focus on food, ordering/making.



Hoole St Michael CE Primary School Spring 1 Overview Class:

