



# Hoole St Michael CE Primary School Spring 1 Overview Class:

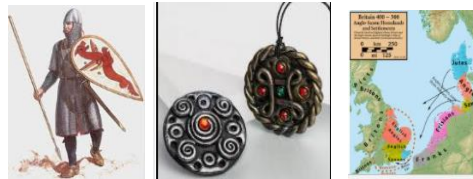
**Bold** *Christian Values* **Resilience** **Strong Relationships** **Active Learners** **partnership**

**Courageous** **Confidence** Thirst for knowledge **Growth Mindset** SUMO Foræst School **Enrichment**

## English: Courage and Bravery

We begin the half term with legends of the British Isles and the **courageous** story of Beowulf. We will continue the year-long theme of heroes and villains, exploring the **bravery** of Beowulf and the villainous Grendel. We will explore the tale through short writing activities, and work to create a legend of our own. Linking to our learning in history, we will also be creating persuasive speeches and presentations in role as Beowulf, imploring our men to show **courage** and save the kingdom.

## Exploration Bravery Artisan



## Maths: Mastery – Growth Mindset Resilience

Fractions is the focus of learning in both Year 5 and 6 this half term. We will be recognising them, simplifying them, spotting equivalents and calculating with them too. Throughout, we will see the link between fractions, decimals and percentages, encouraging deep and broad links in learning. We will be working practically to form fractions, unlocking the maths and using **our Growth Mindset** to apply our learning to various representations.

## Geography/History: Exploration Artisan Enrichment

**History:** The history of the Anglo Saxon invasion and settlement of the United Kingdom. We will be studying their motives for travel, craftsmanship and ultimate ruling of our nation with an Anglo Saxon king of the whole of England. **Enrichment** - Lancashire Museums  
**Geography:** Locations, physical and human features of the United Kingdom. **Thirst for knowledge** to delve deeper into key locations. Link to DT with a study of famous bridges and islands of the UK.

## Perseverance

## Jesus the Teacher

## Me and My Relationships

Continuation of *Growing and Changing*

## Science: Active Learners Partnerships Confidence

This half term is all about saying, 'What if?' Our focus is on **investigation -led learning** with children building their **confidence** to try out their theories and work together to create fair, accurate tests. The focus of our studies will be the properties of materials. We begin by asking, what if pavements were made of trampoline material? We then progress to investigate stretch, viscosity, polymers and finally thermal conductivity.

## P.E: Active learners Partnerships

Tag Rugby - **team work and confidence.** Dance through the Ages

## Art/DT: Active Learners Partnerships Perseverance

Design and make bridges supporting Anglo Saxon movement of supplies. Focus on successful structures. **Work together.**

## Rule of Law

Music: Enrichment Focus on rock music - Living on a Prayer

French: Thirst for knowledge - focus on food, ordering/making.



## Hoole St Michael CE Primary School Spring 1 Overview Class:



### **IT: Meaningful progression of skills**

In IT this half term, the children will be looking at using Microsoft Excel to create spreadsheets. This is a very complicated skills to learn but the children will look at entering values into cells and create graphs from these. The children will also work out various calculations using formulas. The children will use their learning throughout the term to create spreadsheets and data on the weather in January around the U.K ,the key vocabulary for this half term are; spreadsheet, cell, row, column,